





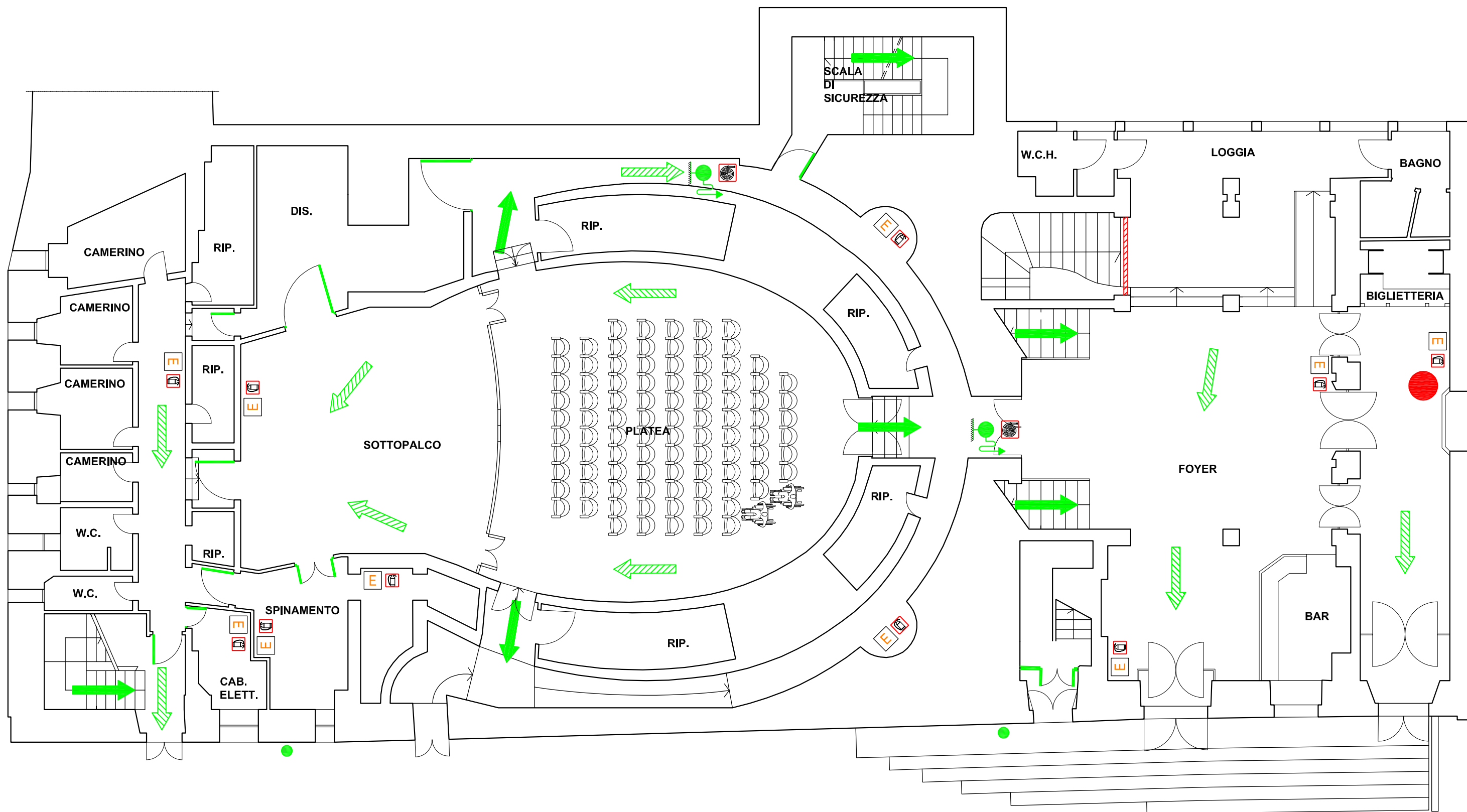


LEGENDA


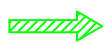




- | | |
|--|---|
|  Estintore portatile per fuochi di classe A-B-C |  Percorso di uscita orizzontale |
|  Idrante UNI45 a muro con flessibile e lancia frazionatrice |  Percorso di uscita verso l'alto |
|  Idrante sottosuolo con attacco UNI45 o UNI70 |  Percorso di uscita verso il basso |

LIVELLO 3 - FOYER

 Voi siete qui

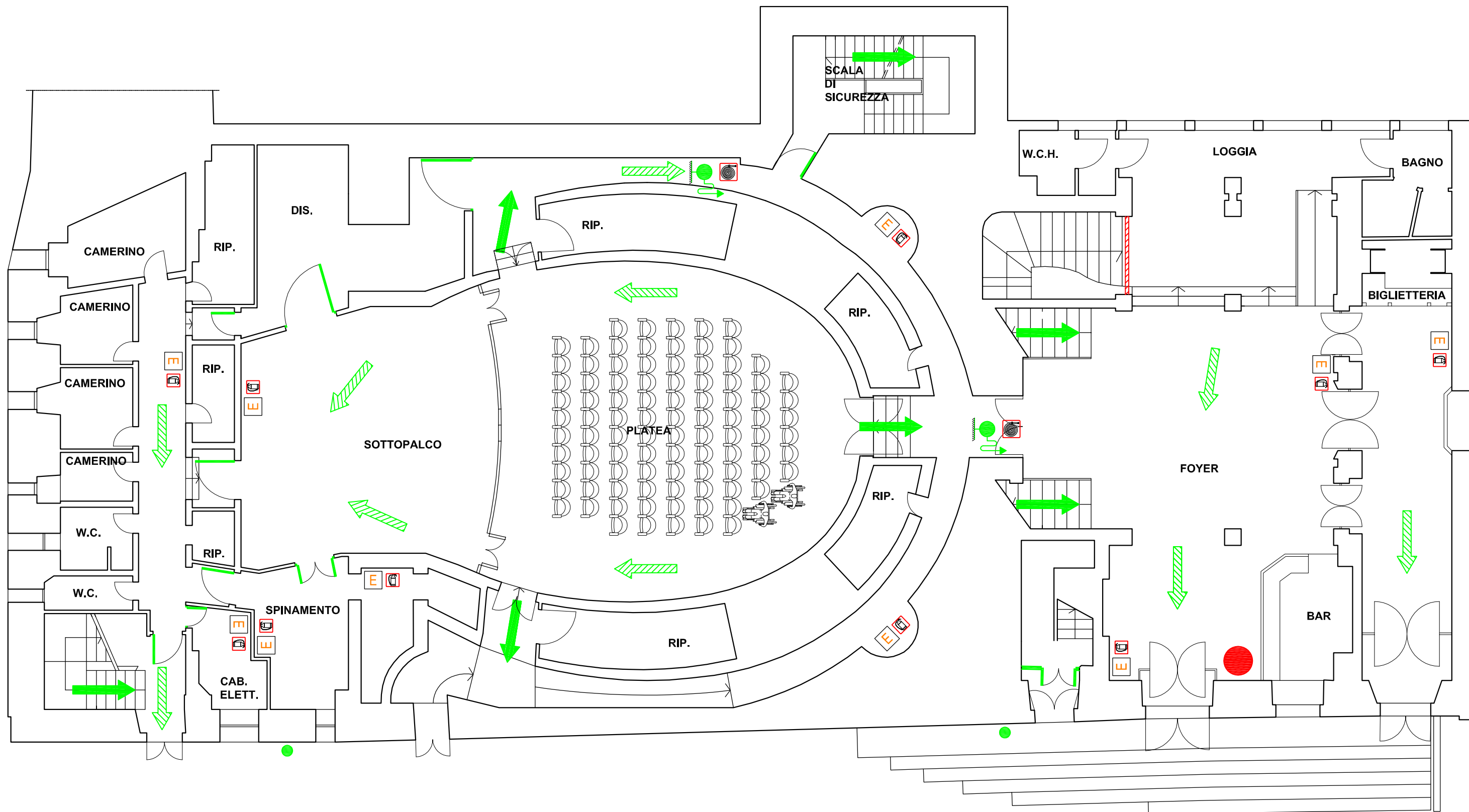


LEGENDA







- | | |
|--|---|
|  Estintore portatile per fuochi di classe A-B-C |  Percorso di uscita orizzontale |
|  Idrante UNI45 a muro con flessibile e lancia frazionatrice |  Percorso di uscita verso l'alto |
|  Idrante sottosuolo con attacco UNI45 o UNI70 |  Percorso di uscita verso il basso |

LIVELLO 3 - FOYER

 Voi siete qui

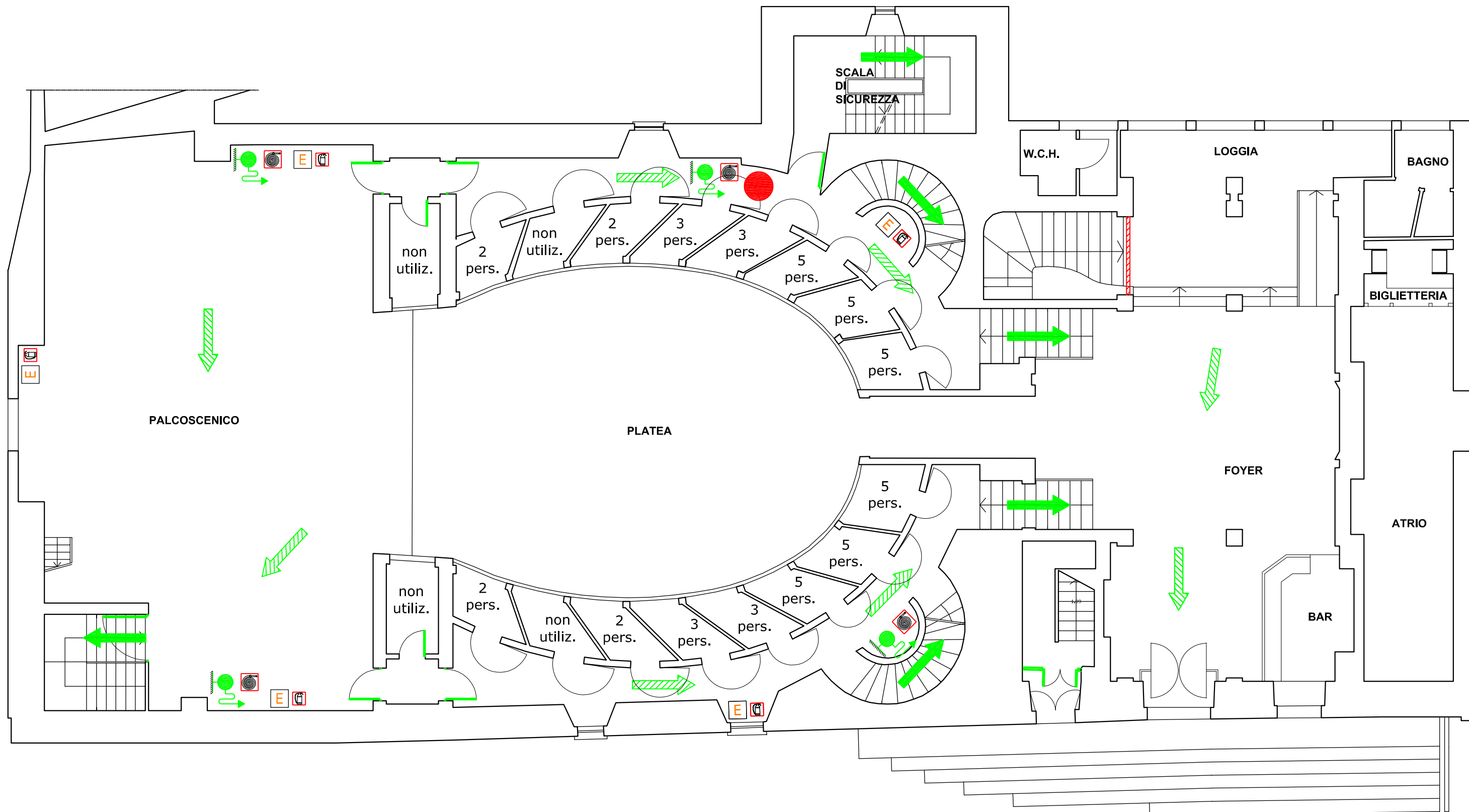


LEGENDA

- | | |
|--|---|
|  Estintore portatile per fuochi di classe A-B-C |  Percorso di uscita orizzontale |
|  Idrante UNI45 a muro con flessibile e lancia frazionatrice |  Percorso di uscita verso l'alto |
|  Idrante sottosuolo con attacco UNI45 o UNI70 |  Percorso di uscita verso il basso |

LIVELLO 3 - FOYER

 Voi siete qui



LEGENDA

- | | | | |
|--|--|--|-----------------------------------|
| | Estintore portatile per fuochi di classe A-B-C | | Percorso di uscita orizzontale |
| | Idrante UNI45 a muro con flessibile e lancia frazionatrice | | Percorso di uscita verso l'alto |
| | Idrante sottosuolo con attacco UNI45 o UNI70 | | Percorso di uscita verso il basso |

LIVELLO 4

PIAZZA DEL DUOMO

Voi siete qui



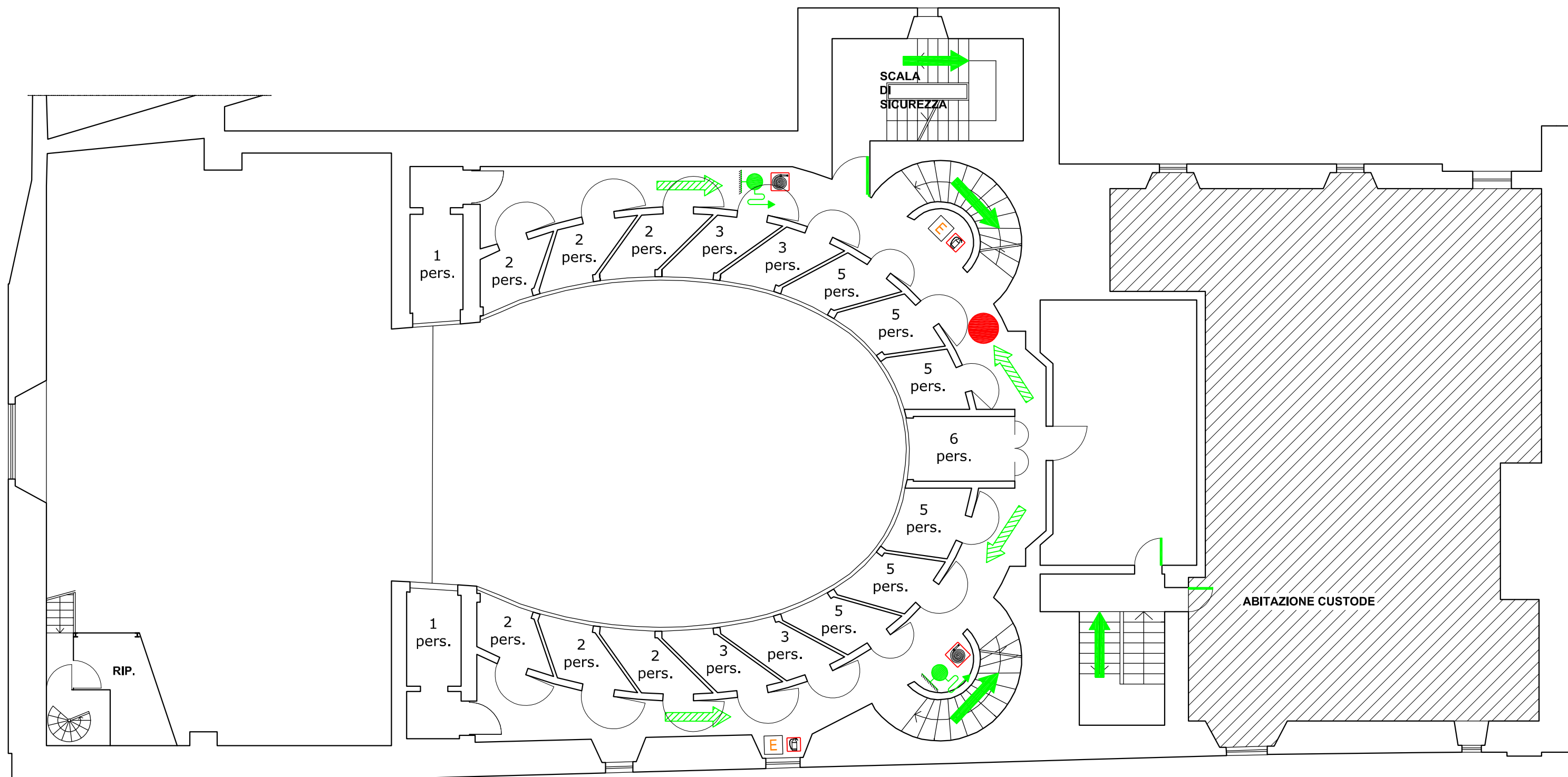
LEGENDA

- | | | | |
|--|--|--|-----------------------------------|
| | Estintore portatile per fuochi di classe A-B-C | | Percorso di uscita orizzontale |
| | Idrante UNI45 a muro con flessibile e lancia frazionatrice | | Percorso di uscita verso l'alto |
| | Idrante sottosuolo con attacco UNI45 o UNI70 | | Percorso di uscita verso il basso |

LIVELLO 4





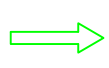


PIAZZA DEL DUOMO

Voi siete qui

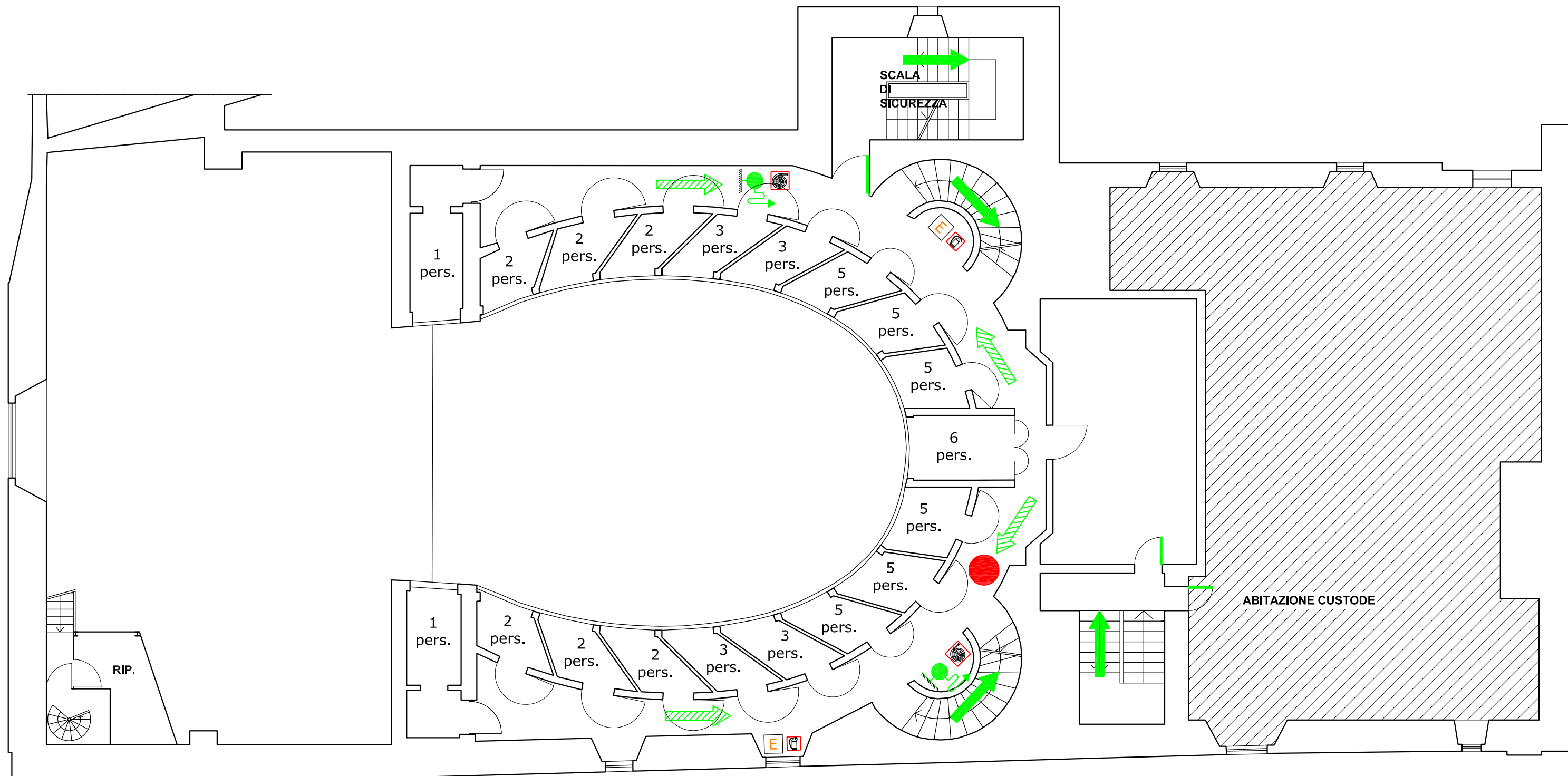


LIVELLO 5

LEGENDA




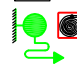
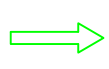


- | | | | |
|---|--|---|-----------------------------------|
|   | Estintore portatile per fuochi di classe A-B-C |  | Percorso di uscita orizzontale |
|  | Idrante UNI45 a muro con flessibile e lancia frazionatrice |  | Percorso di uscita verso l'alto |
|  | Idrante sottosuolo con attacco UNI45 o UNI70 |  | Percorso di uscita verso il basso |

 Voi siete qui

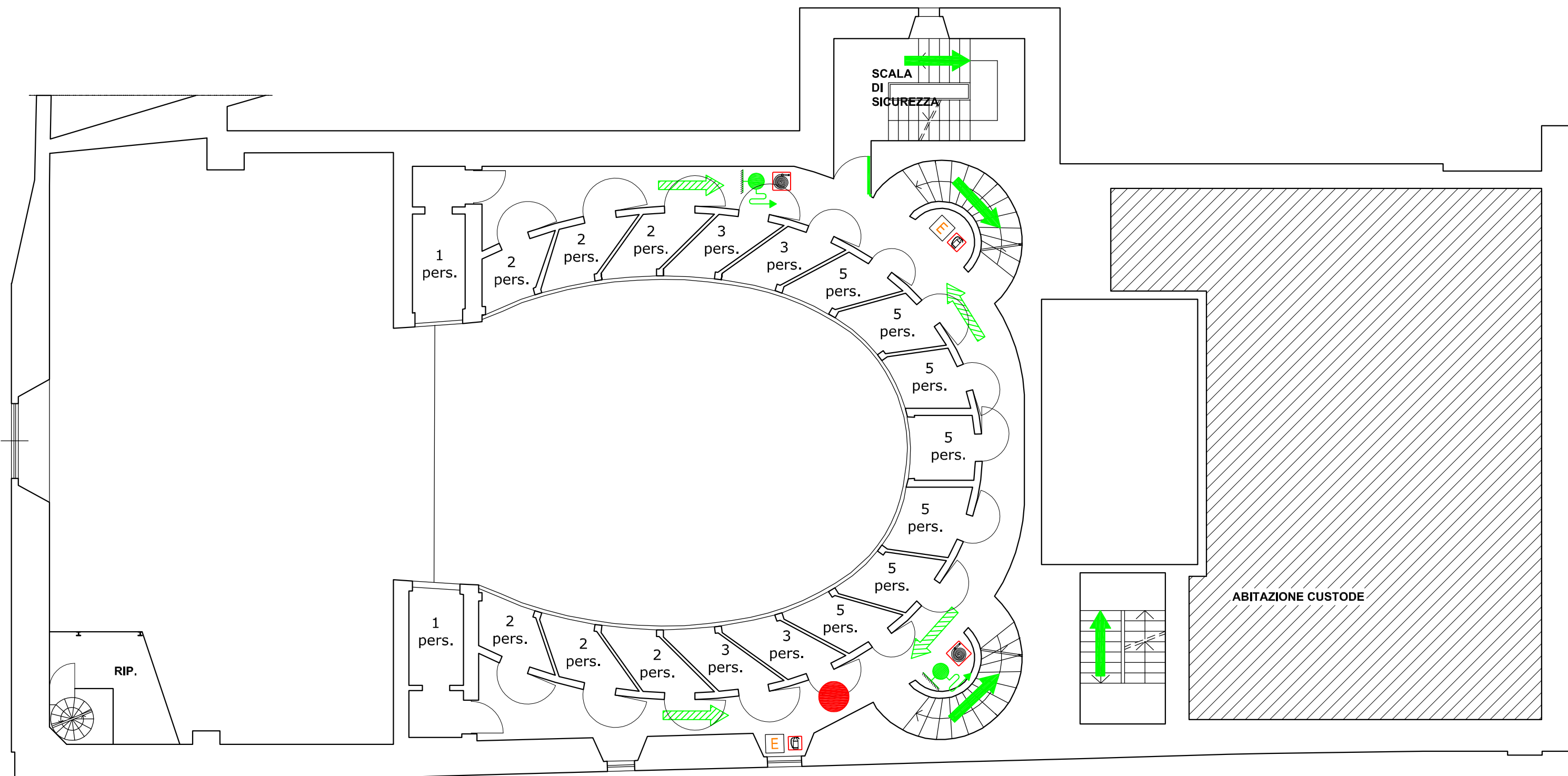


LIVELLO 5

LEGENDA







- | | | | |
|---|--|---|-----------------------------------|
|   | Estintore portatile per fuochi di classe A-B-C |  | Percorso di uscita orizzontale |
|  | Idrante UNI45 a muro con flessibile e lancia frazionatrice |  | Percorso di uscita verso l'alto |
|  | Idrante sottosuolo con attacco UNI45 o UNI70 |  | Percorso di uscita verso il basso |

 Voi siete qui

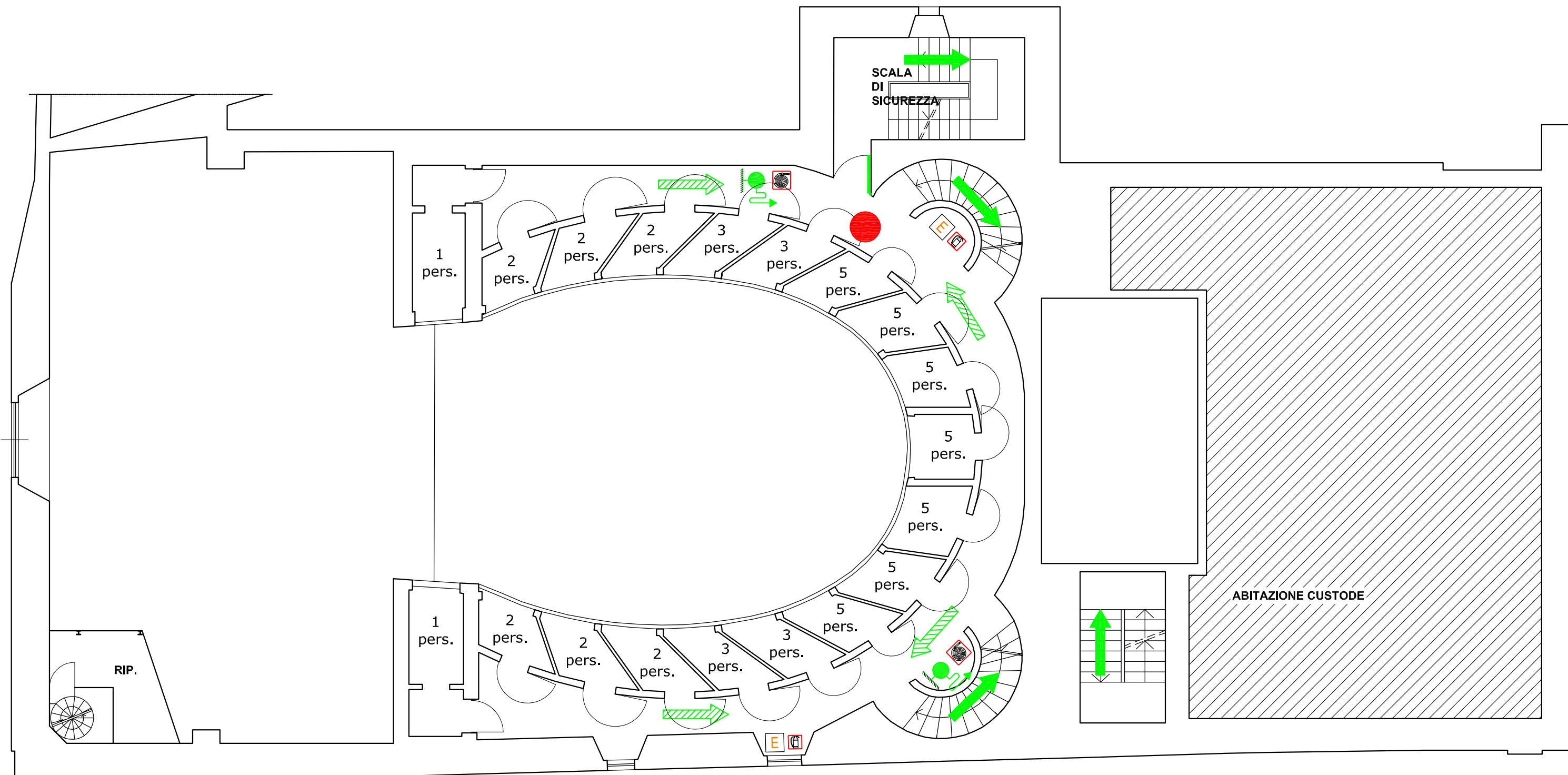


LIVELLO 6

LEGENDA








- | | | | |
|---|--|---|-----------------------------------|
|  | Estintore portatile per fuochi di classe A-B-C |  | Percorso di uscita orizzontale |
|  | Idrante UNI45 a muro con flessibile e lancia frazionatrice |  | Percorso di uscita verso l'alto |
|  | Idrante sottosuolo con attacco UNI45 o UNI70 |  | Percorso di uscita verso il basso |

 Voi siete qui

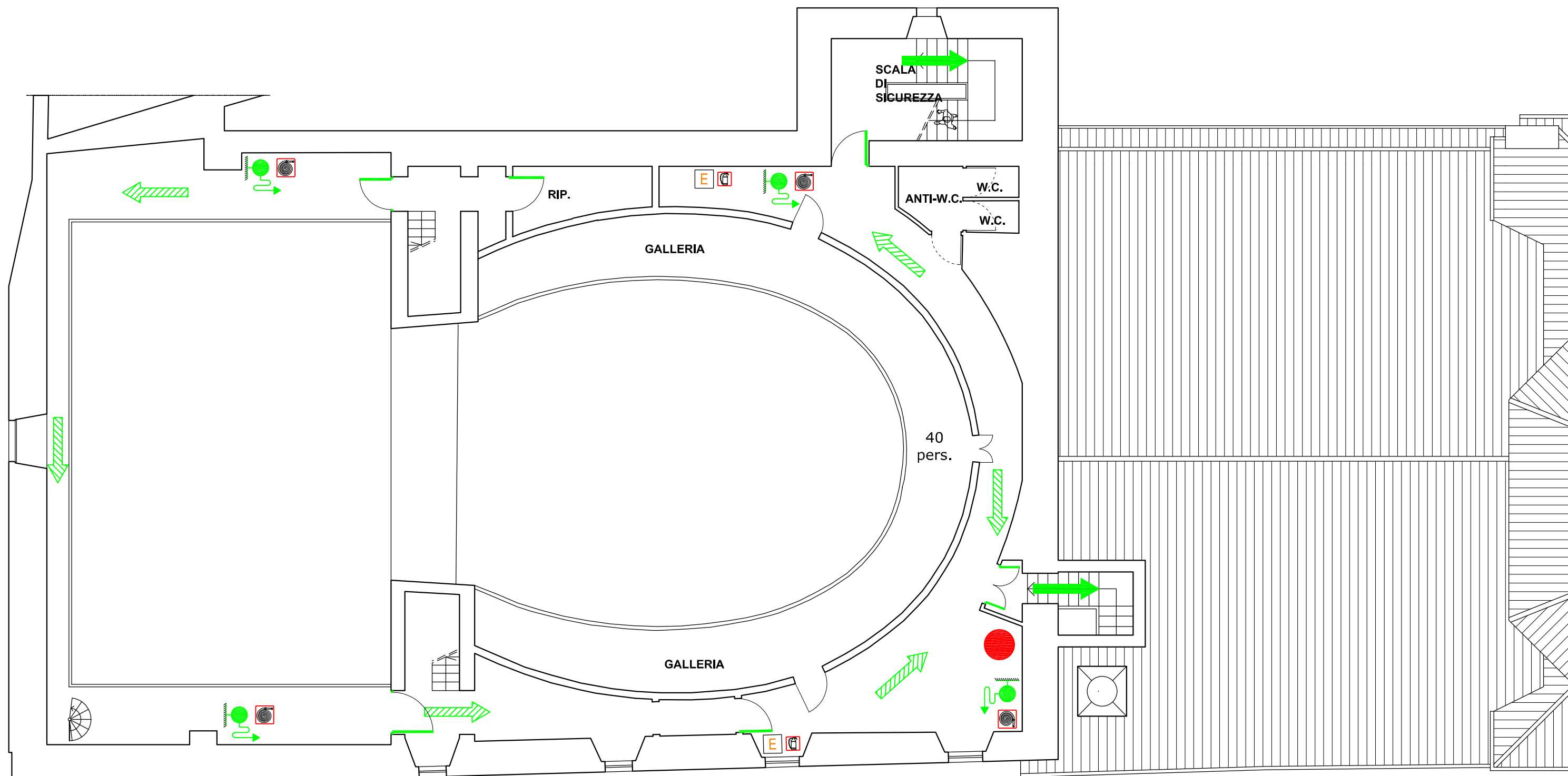


LIVELLO 6

LEGENDA


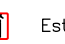






- | | | | |
|---|--|---|-----------------------------------|
|   | Estintore portatile per fuochi di classe A-B-C |  | Percorso di uscita orizzontale |
|  | Idrante UNI45 a muro con flessibile e lancia frazionatrice |  | Percorso di uscita verso l'alto |
|  | Idrante sottosuolo con attacco UNI45 o UNI70 |  | Percorso di uscita verso il basso |

 Voi siete qui

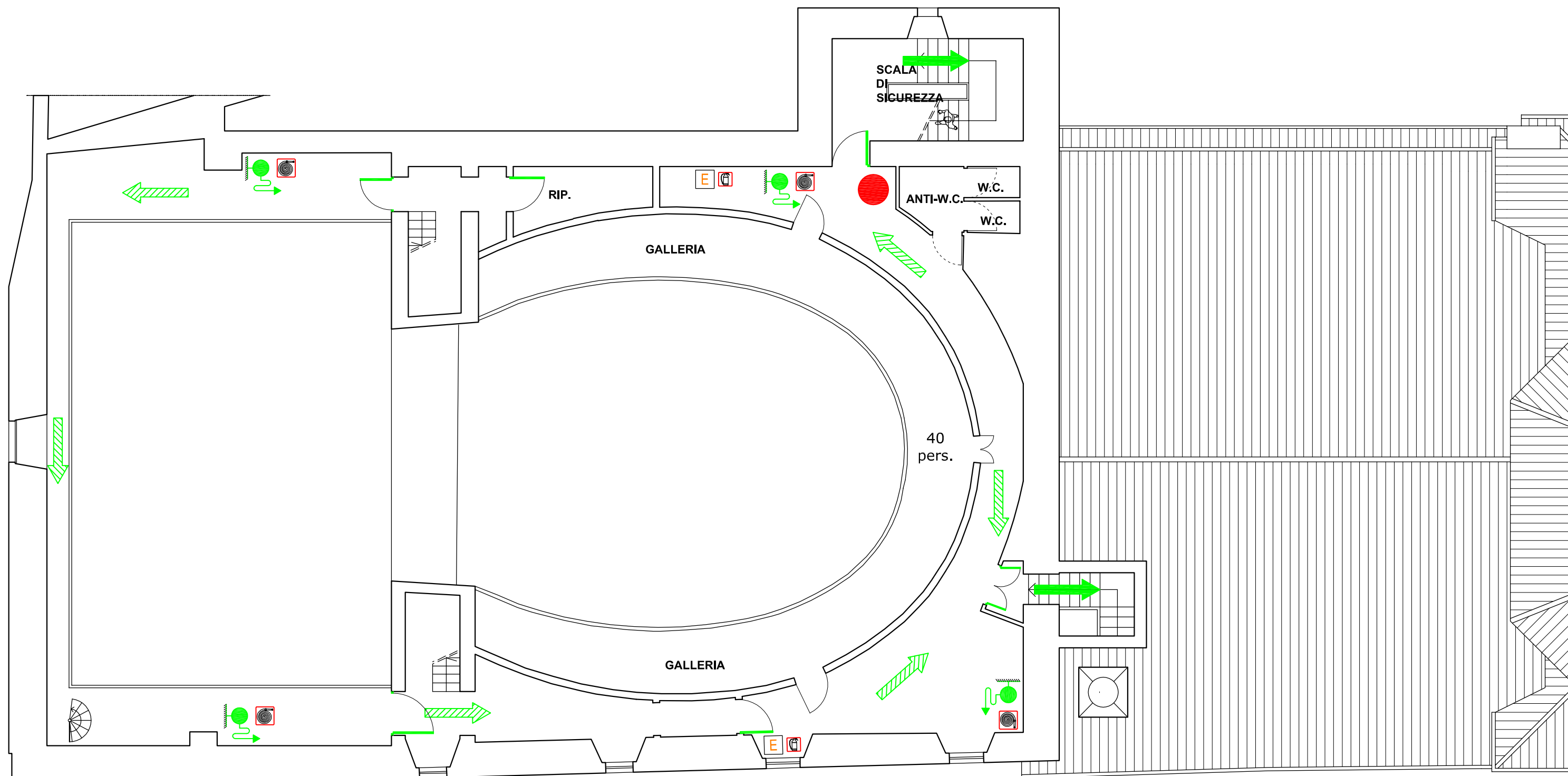


LIVELLO 7

LEGENDA


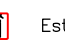



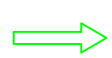

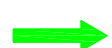
- | | | | |
|---|--|---|-----------------------------------|
|   | Estintore portatile per fuochi di classe A-B-C |  | Percorso di uscita orizzontale |
|   | Idrante UNI45 a muro con flessibile e lancia frazionatrice |  | Percorso di uscita verso l'alto |
|  | Idrante sottosuolo con attacco UNI45 o UNI70 |  | Percorso di uscita verso il basso |

 Voi siete qui

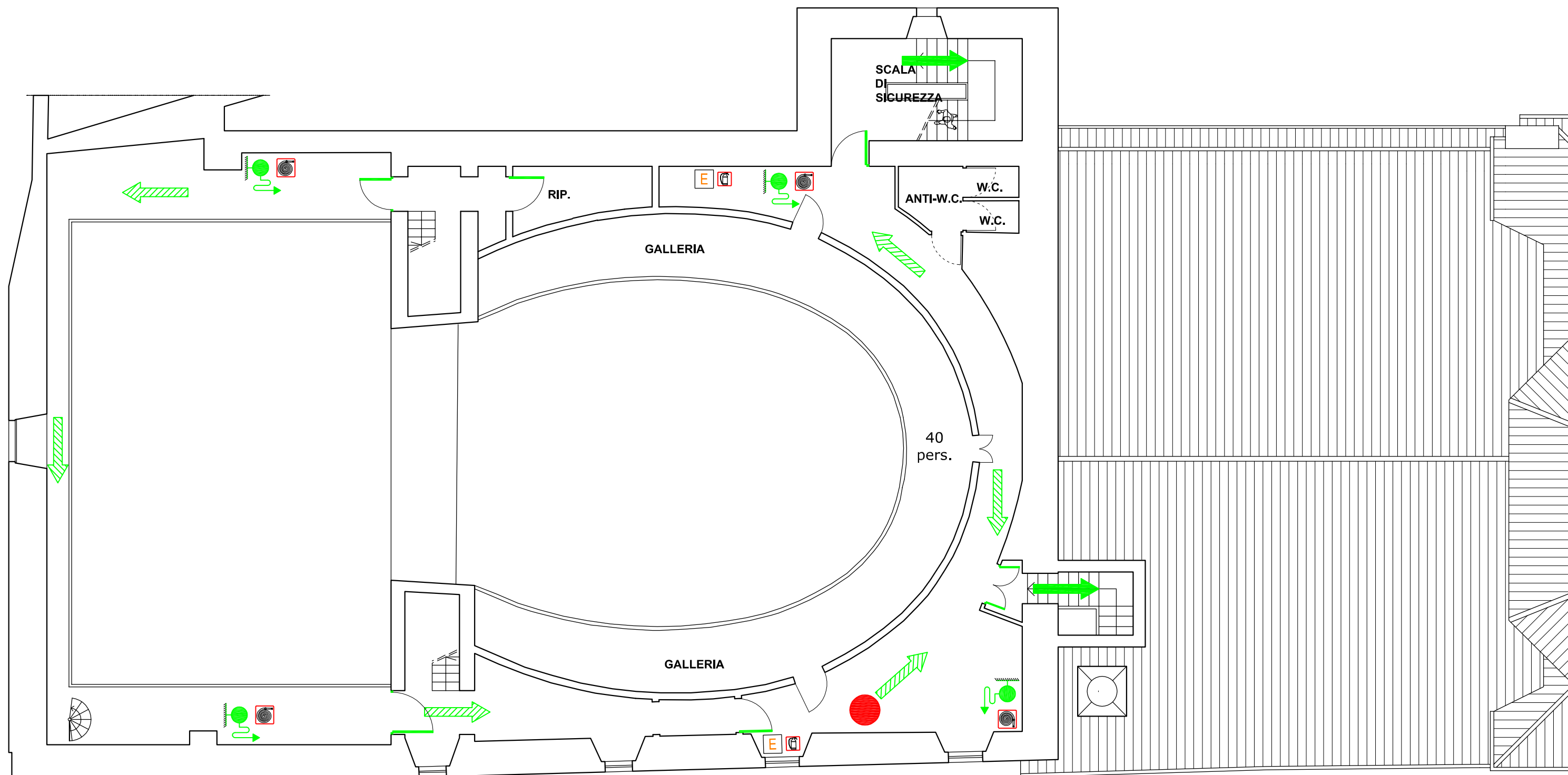


LIVELLO 7

LEGENDA


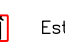



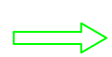


- | | | | |
|---|--|---|-----------------------------------|
|   | Estintore portatile per fuochi di classe A-B-C |  | Percorso di uscita orizzontale |
|   | Idrante UNI45 a muro con flessibile e lancia frazionatrice |  | Percorso di uscita verso l'alto |
|  | Idrante sottosuolo con attacco UNI45 o UNI70 |  | Percorso di uscita verso il basso |

 Voi siete qui



LIVELLO 7

LEGENDA

- | | | | |
|---|--|---|-----------------------------------|
|   | Estintore portatile per fuochi di classe A-B-C |  | Percorso di uscita orizzontale |
|   | Idrante UNI45 a muro con flessibile e lancia frazionatrice |  | Percorso di uscita verso l'alto |
|  | Idrante sottosuolo con attacco UNI45 o UNI70 |  | Percorso di uscita verso il basso |

 Voi siete qui